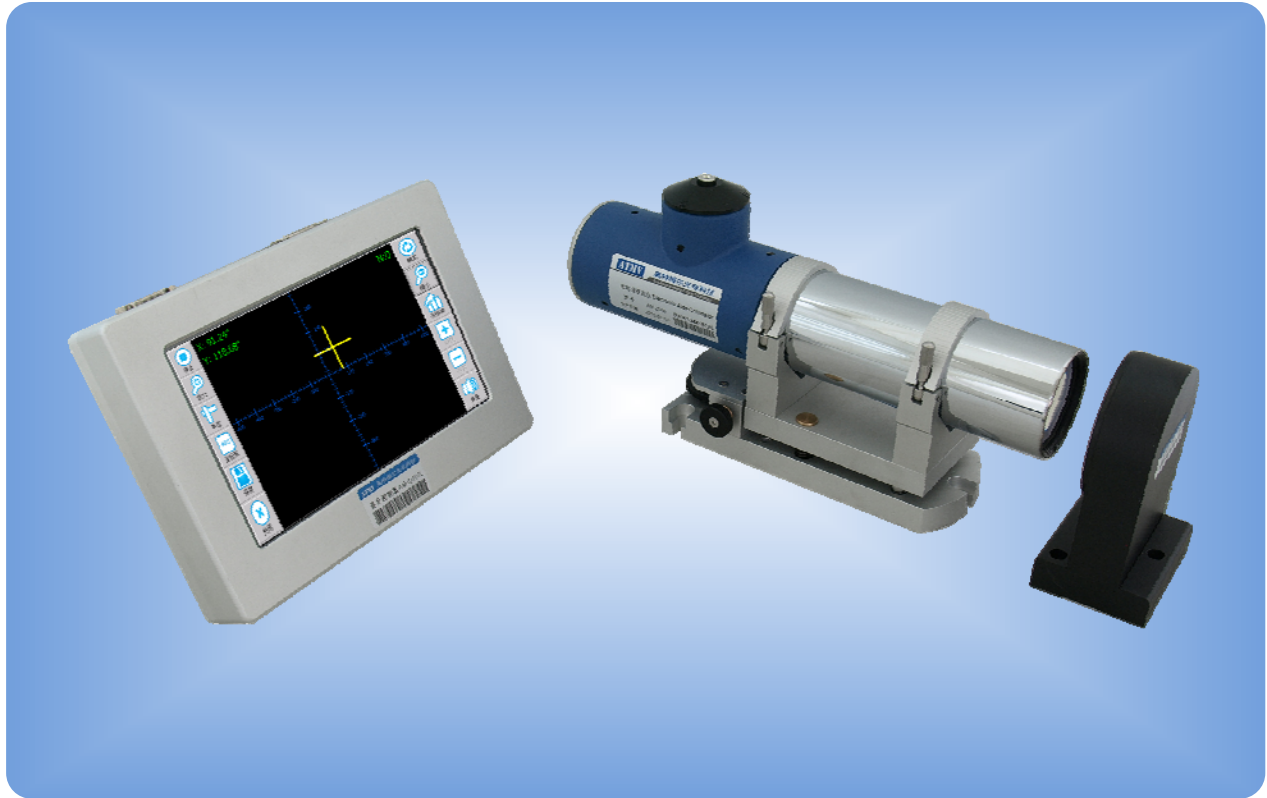


嵌入式光电自准直仪 EMBEDDED ELECTRONIC AUTO-COLLIMATOR



AutoMAT AM系列产品采用LVDS高速工业总线接口标准设计，配有工业级嵌入式平板显示控制终端，产品标配具有实时视频图像显示模式，使得该系列产品尤其适用于机械制造、光学制造及工业现场装调和检测应用，也适用于为各类测量专机配套应用。

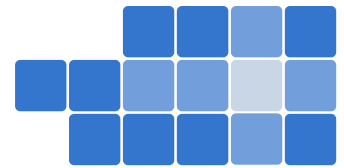
The **AutoMAT AM** series is a robust auto-collimator system. The dedicate designed high-speed data interface and an embedded touch-screen display unit make this series of products well suited for industrial and optical field test.

产品特性 (Features)

- 全金属外壳显示终端 (Full Metal Display Unit);
- 实时视频影像显示功能 (Real-time Video Display);
- 触摸屏操作 (Touch-sensitive Screen);
- XY双轴同时测量 (Dual-axis measurements);
- 高分辨率图像传感器 (High resolution Image Sensors);
- 电子目镜显示模式 (Electronic Viewfinder);
- 长寿命LED光源 (LED Light Sources);
- 全数字信号处理 (Digital image processing technology);
- RS-232数据接口 (RS-232 interface);
- 丰富的测量配附件 (Rich accessories);
- 选配的上位机测量软件模块 (Optional PC Software Package);

典型应用 (Applications)

- 精密机械安装定位 (Alignment of machinery);
- 机械产品直线度、平面度、垂直度、平行度等精度保障 (Proof for straightness, flatness, parallelism of rails, tables and linear stage etc.);
- 精密旋转台检测 (Rotary table measurement);
- 航空航天 (Alignment of astronomical system);
- 光学产品装配及调整 (Assembly and adjustment of optical components like mirrors, prisms, windows, wedges etc.);
- 物理及光学实验室 (Alignment of components for the beam control in high energy physics);



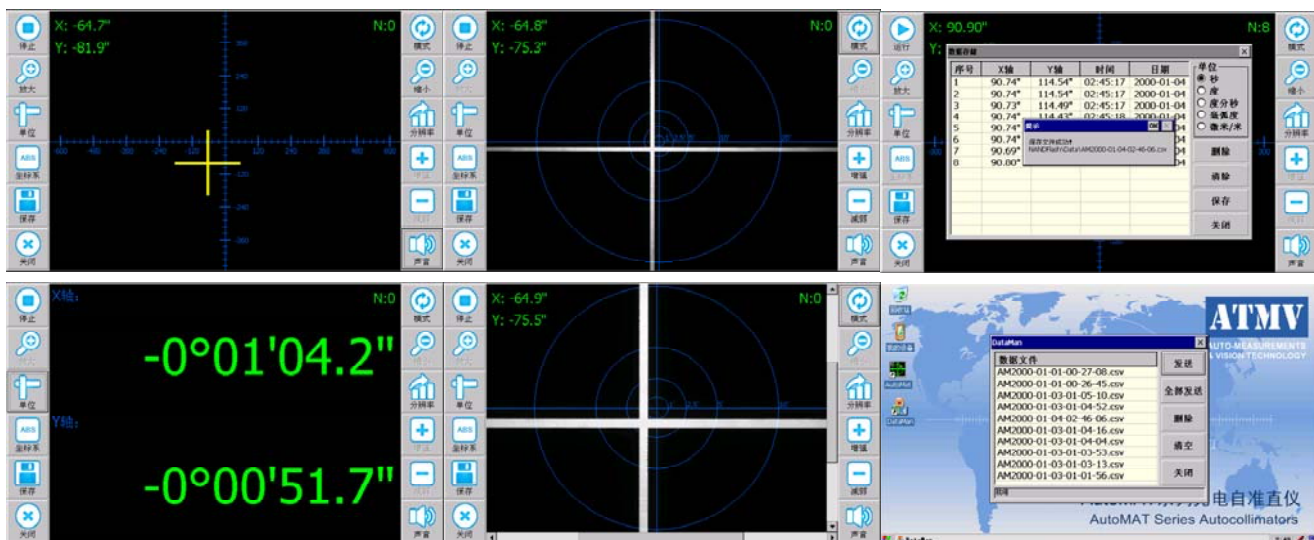
AutoMAT AM Series

Measure with Precision

规格 (Specifications)

型号	Order Number	AM-2048	AM-3048	AM-A100
物镜焦距 (Focal Length)		200mm	300mm	1000mm
物镜口径 (Lens Diameter)		48mm (NA. = 85%)	48mm (NA. = 85%)	100mm (NA. = 90%)
光源类型 (Light Source)		大功率半导体光源 LED Light Source (中心波长 $\lambda=630\text{nm}$)		
探测器 (Sensors)		高分辨率图像传感器 (High Resolution Image Sensors)		
目镜 (Viewfinder)		实时视频影像或软件电子目镜 (Real-time Video or Electronic Viewfinder Mode)		
测量频响 (Measuring Frequency)		20Hz TYP.		
接口 (Interface)		LVDS专用高速数据接口 (Custom LVDS Interface)		
测量距离 (Measuring Distance)		20米 (20 meter MAX.)	10米 (10 meter MAX.)	5米 (5 meter MAX.)
最大读数视场 (Measuring Range)		3000"×2400" (arc sec. 角秒)	2000"×1400" (arc sec. 角秒)	400"×300" (arc sec. 角秒)
分辨率 (Resolution)		0.01" (arc sec. 角秒)	0.01" (arc sec. 角秒)	0.01" (arc sec. 角秒)
精度 (Accuracy)	±100" (arc sec. 角秒)	0.5" (arc sec. 角秒)	0.3" (arc sec. 角秒)	0.2" (arc sec. 角秒) ^[1]
	±1000" (arc sec. 角秒)	1" (arc sec. 角秒)	0.6" (arc sec. 角秒) ^[1]	
重复性 (Repeatability)		0.2" (arc sec. 角秒)	0.1" (arc sec. 角秒)	0.05" (arc sec. 角秒)
准直仪尺寸 (Dimensions) (mm)		285(L)×93(W)×140(H)	385(L)×93(W)×140(H)	1100(L)×165(W)×200(H)
准直仪重量 (Weight)		3.0KG	3.2KG	18KG
显示控制终端尺寸 (Dimensions of Display Unit)		200mm(L)×140mm(W)×35mm(D)		
显示控制终端规格 (Specs. of Display Unit)		7' 英寸彩色液晶触摸屏 800×480分辨率 (7" TFT Touch LCD), 可选的RS-232扩展接口		

[1] 精度指标为全视场范围 (Specification is for entire measuring range);

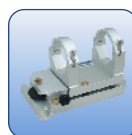


多种显示模式、可缩放的实时视频、数据存储及远程传输 (Software Viewfinder & Real-time Video Display Mode)

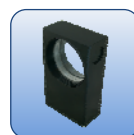
标准附件 (Standard Accessories)



MA60^[1]
标准反光镜
Standard Mirror



AH54S^[1]
二维可调底座
Adjustable Holder



MA100^[2]
标准反光镜
Standard Mirror

[1] 2048 / 3048 标准配置配件 (2048 / 3048 Model Standard Configuration included);

[2] A100型号标配 (Standard Accessorie for A100 model);